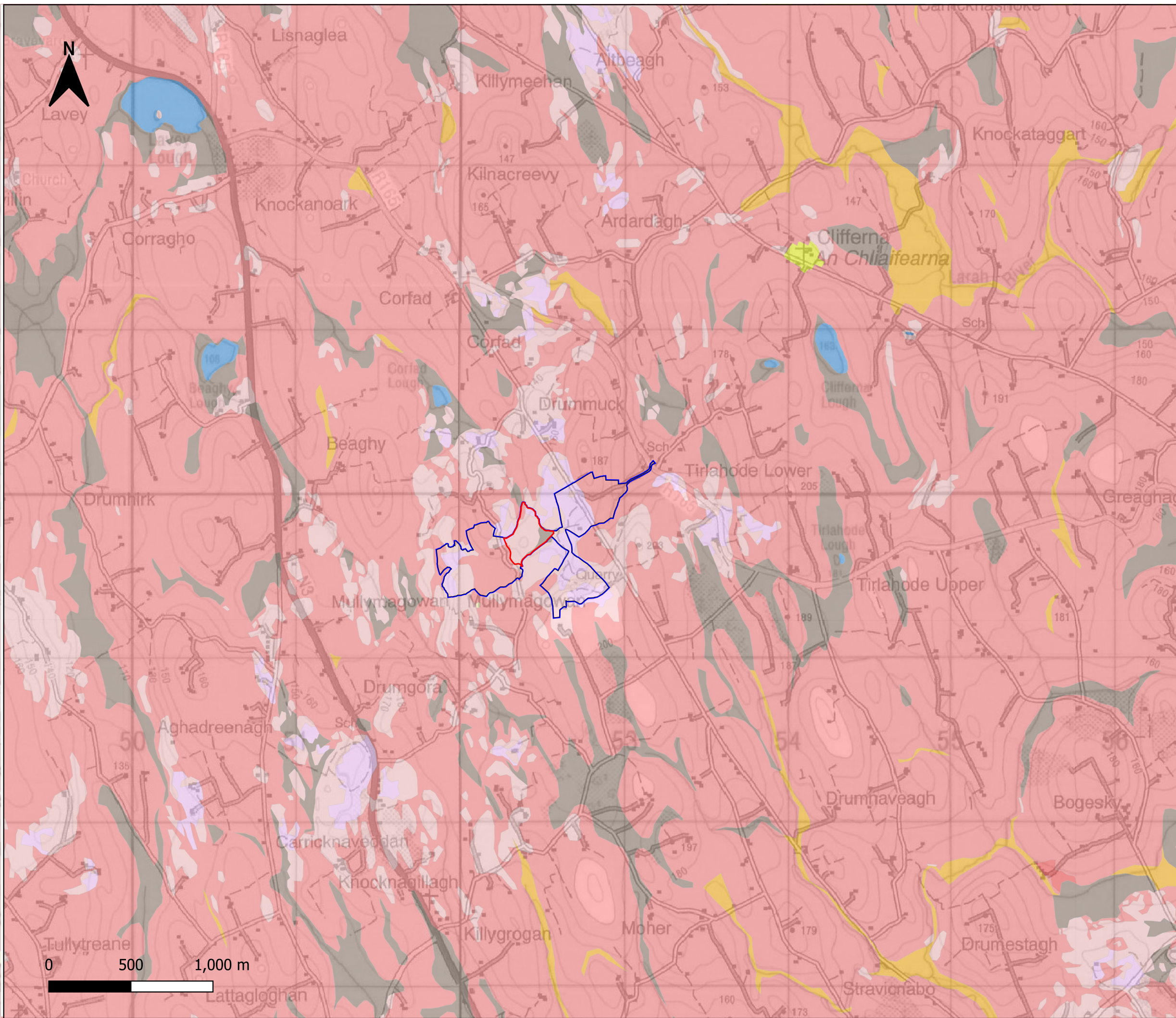


\\eas\dfs\SLR_DATA\SLR_Projects\904200 P&S Civil\064821 Stradone EIA\



NOTES

- 1. Ordnance Survey Ireland Licence no. CYAL50248253
© Ordnance Survey Ireland/Government of Ireland
- 2. Bedrock Geology data ©GSI
- 3. Base Mapping OSi Discovery Series Sheets: 34, 35

LEGEND

- APPLICATION BOUNDARY
 - LANDHOLDING BOUNDARY
- ISIS SOILS**
- AminPD - Mineral poorly drained (Mainly acidic)
 - AminSW - Shallow well drained mineral (Mainly acidic)
 - AminSRPT - Shallow, rocky, peaty/non-peatymineral complexes (Mainly acidic)
 - Cut - Cutover/cutaway peat
 - AlluvMIN - Alluvial (mineral)
 - Made ground
 - Water

SLR

SLR CONSULTING
7 DUNDRUM BUSINESS PARK
WINDY ARBOUR
D14 N2Y7
T +353 (0)1296 4667
www.slrconsulting.com

P&S CIVIL WORKS LTD
ENVIRONMENTAL IMPACT ASSESSMENT REPORT

**QUARRY AT MULLYMAGOWAN,
STRADONE, CO. CAVAN**

NATIONAL SOILS MAP

FIGURE 6-1

Scale 1:25000 @ A3	Date FEBRUARY 2023
-----------------------	------------------------------